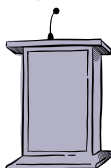
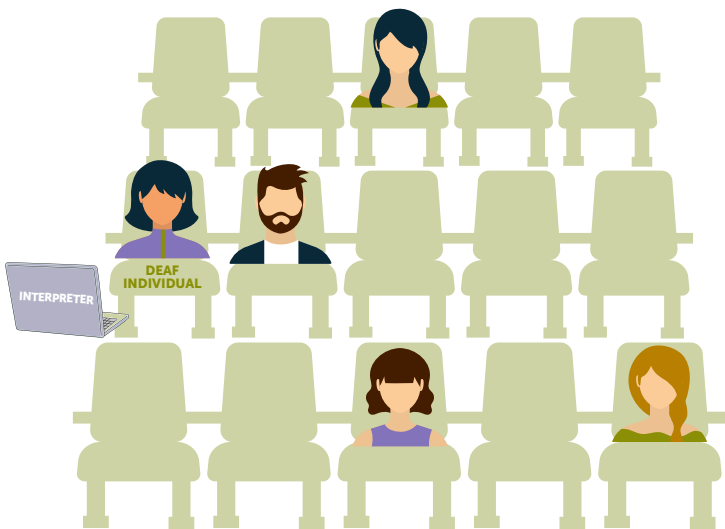
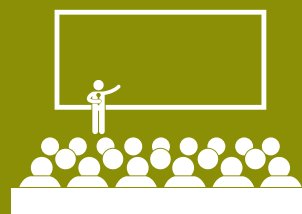




DEAF SERVICES UNLIMITED

# VRI Configuration

LECTURE HALL/ CONFERENCE



## QUESTIONS TO CONSIDER



Is the room noise suitable to hear the Interpreter voicing through the device?



Is the lighting suitable for the Deaf Individual to see the Interpreter on screen?



Is the microphone located centrally to capture all spoken audio for signing?

\*If the audience will be responding, be sure to have a mobile microphone available connected to the audio feed. Also, ensure Hearing Individual presenting will be able hear the Interpreter through a speaker if the Deaf Individual responds.



Visit Our Website  
[www.deafservicesunlimited.com](http://www.deafservicesunlimited.com)



Call Us  
+800-930-2580



Follow Us  
@DeafServicesUnlimited